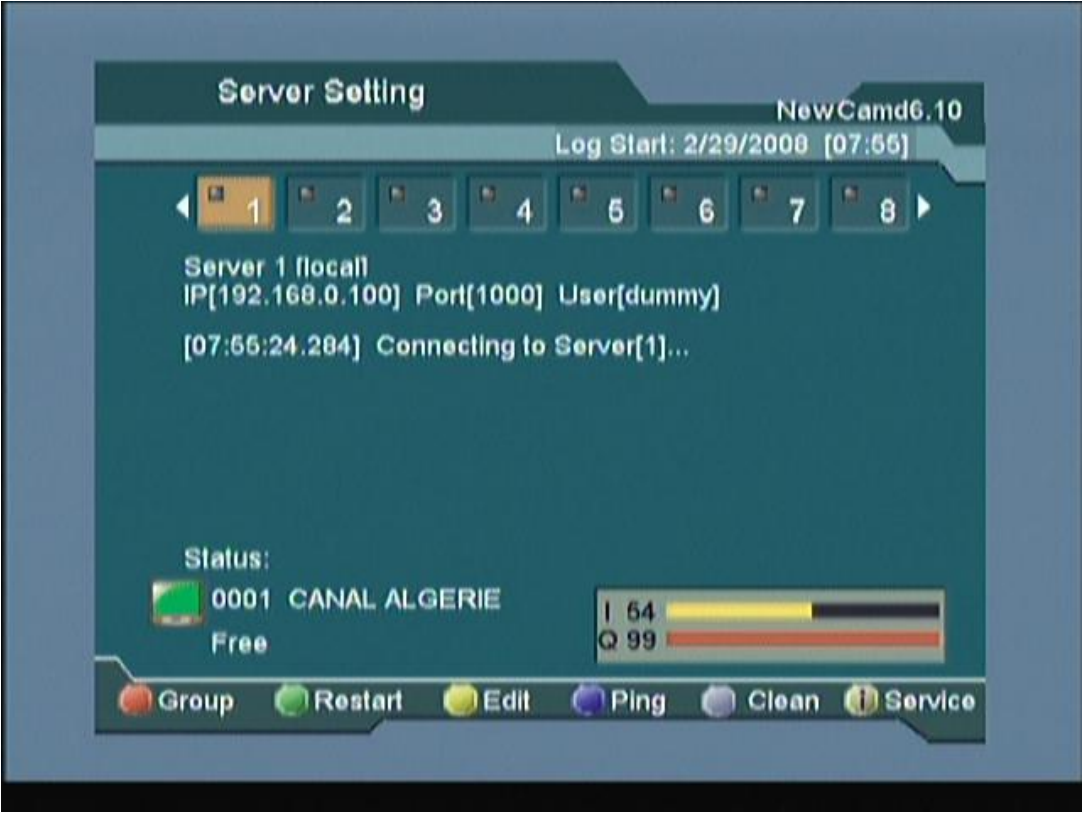
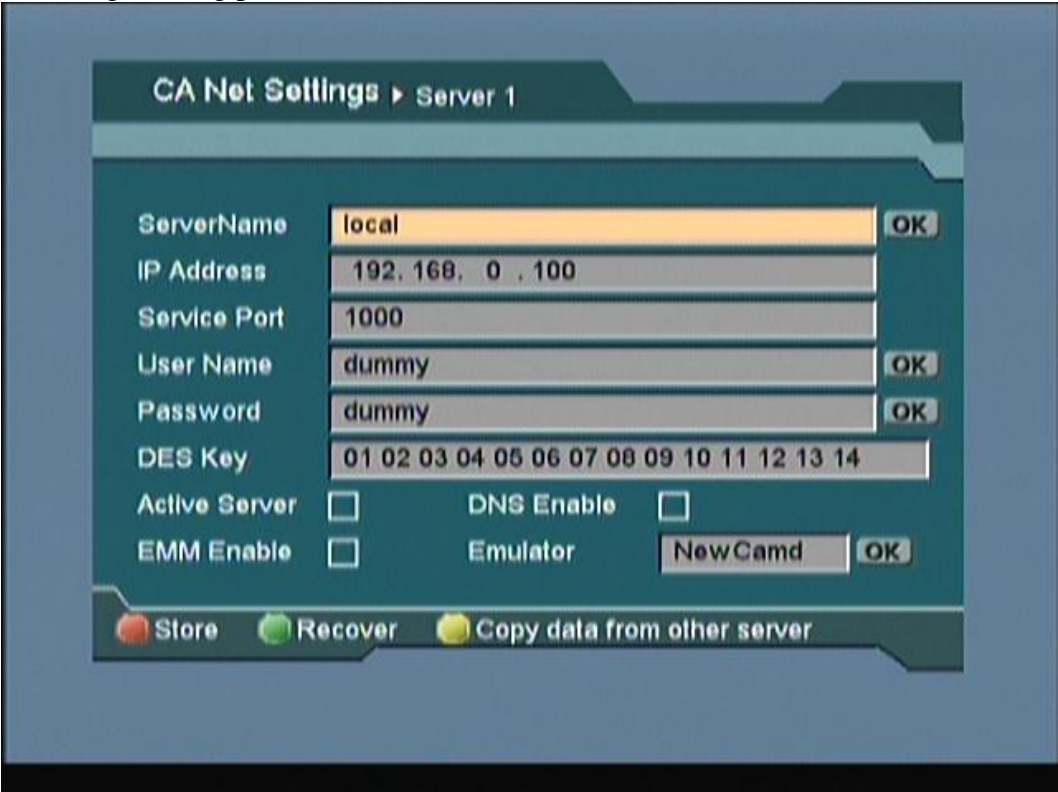


To go to LAN menu press on remote:
INFO and than BLUE key. (you must have channels scanned)
You will see following menu:

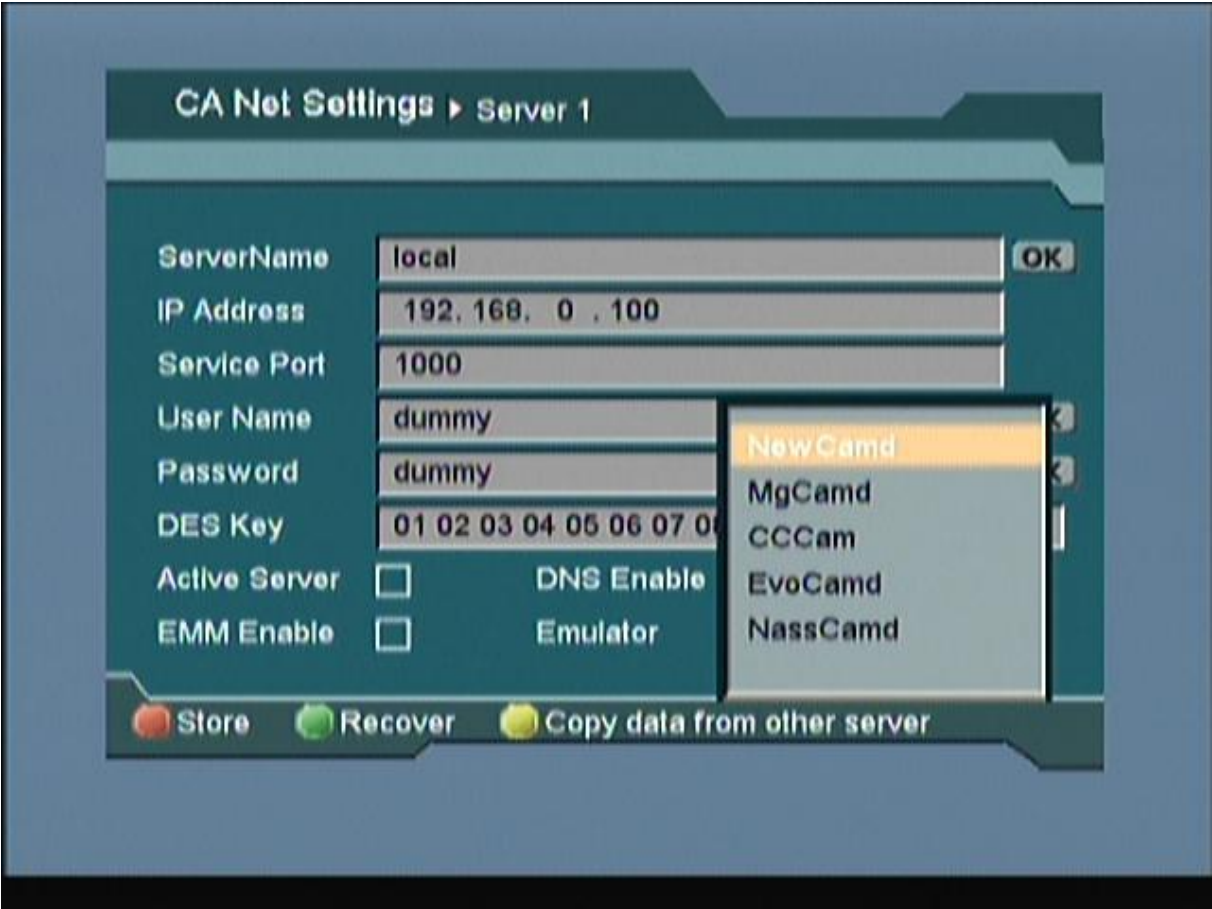


You can connect to 8 servers the same time.
Choose your server with buttons <,>.
To change setting press EDIT

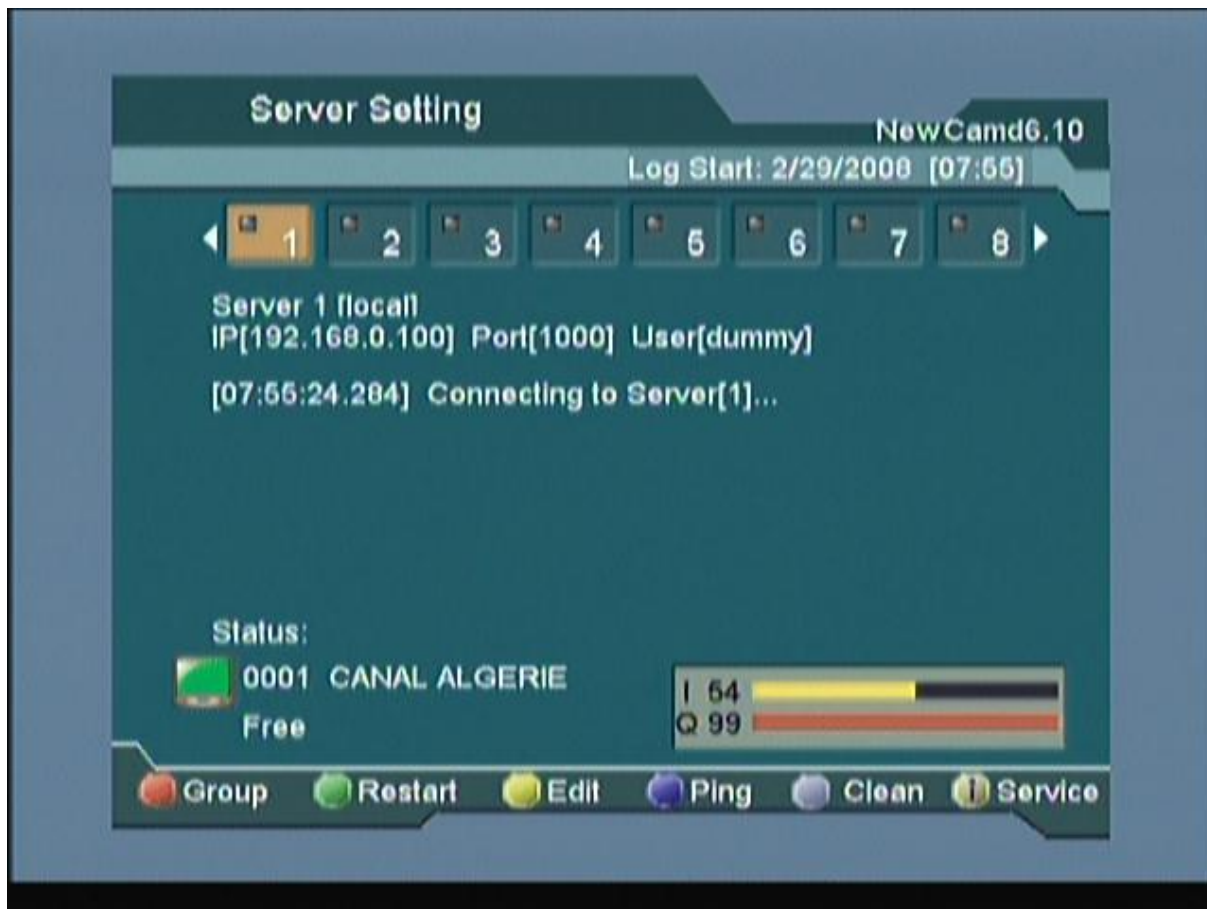


To change for different type go to EMULATOR window and press OK
This receiver can support dreambox-like servers:

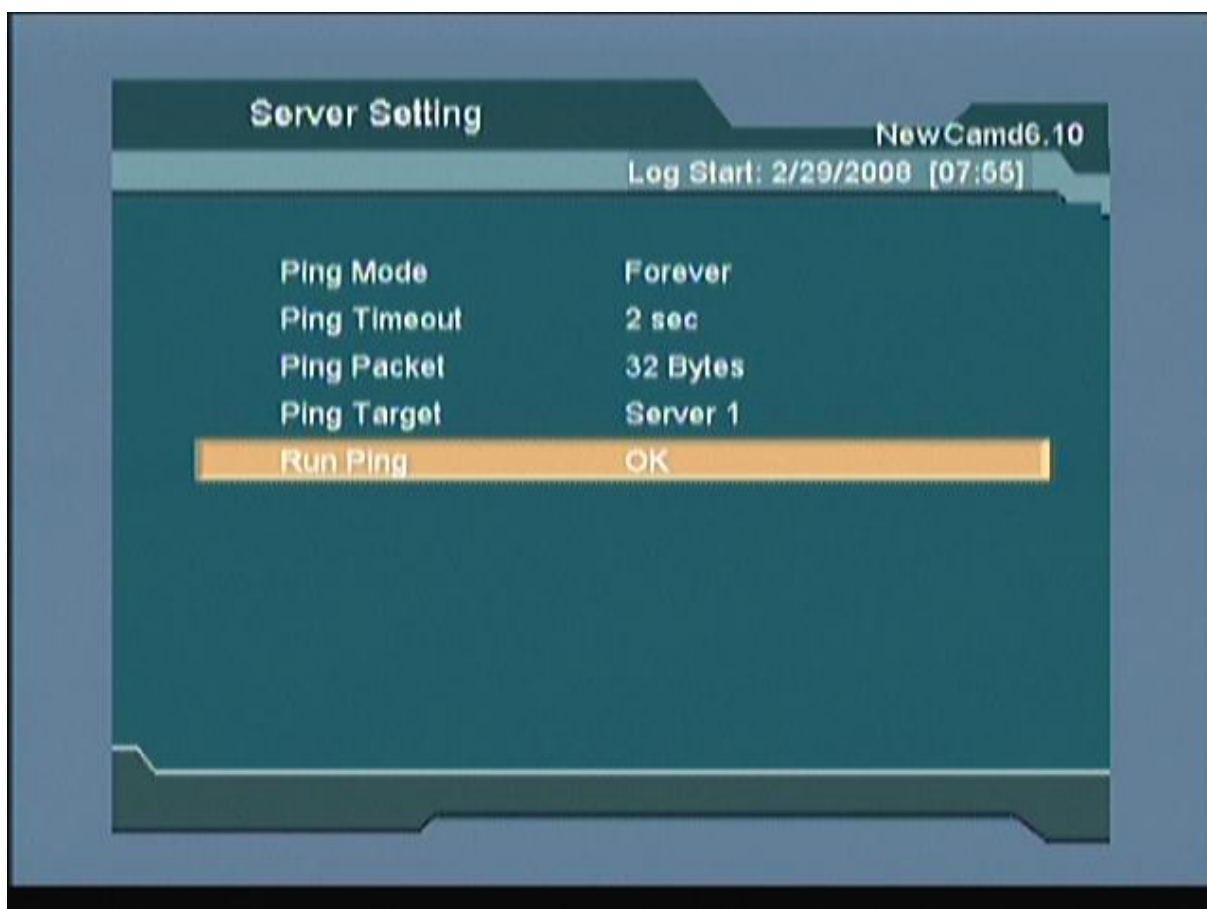
- NewCamd
- MgCamd
- CCCam
- EvoCamd
- NassCamd



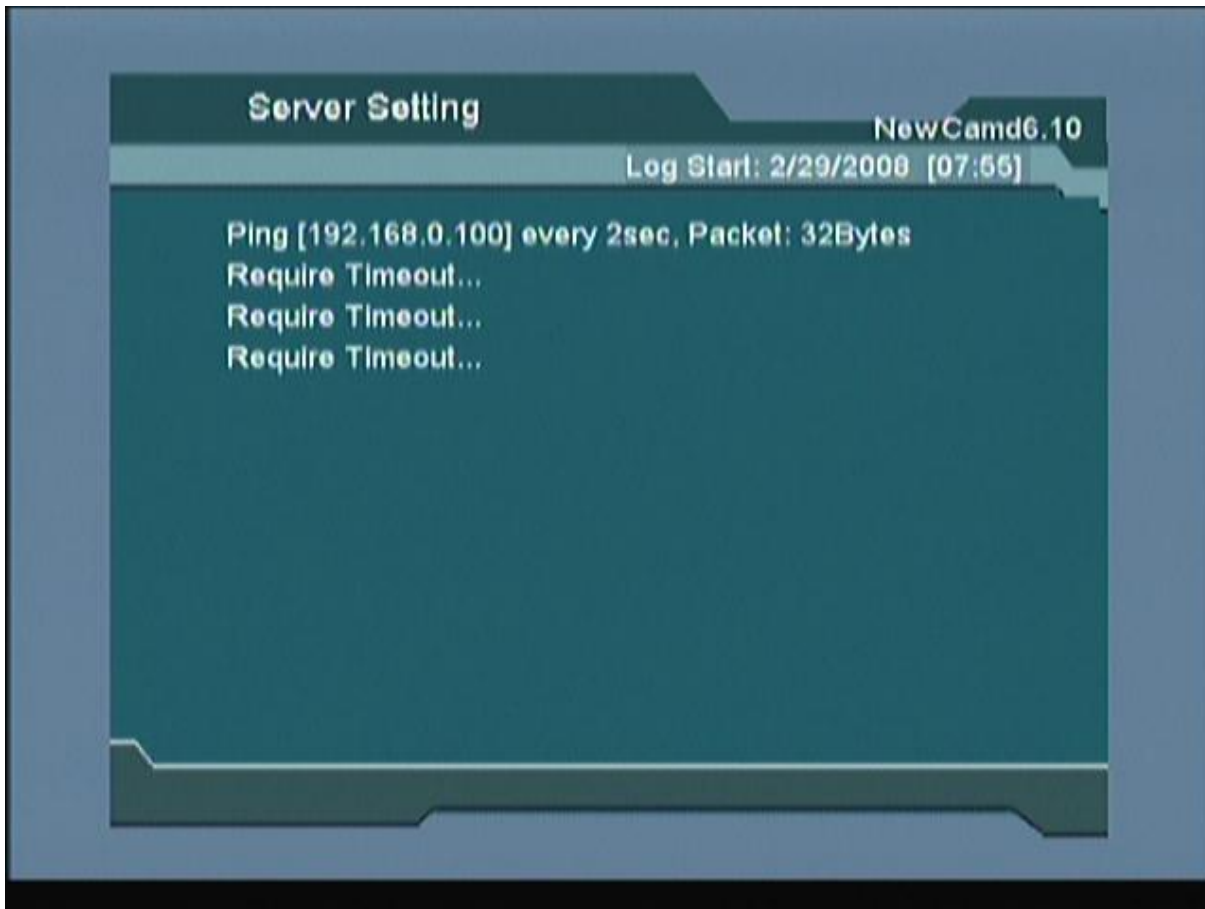
After making all configuration press RED BUTTON TO STORE.
Receiver will connect to connect to the server. You can see the status of connections in main window:



To troubleshoot, you can use PING command.
Choose your server and press OK. on RUN PING.



When connected you will see answer from the server here:



Enjoy.

<http://www.truman-support.com/soft/globo>